

The background is a solid orange color with a repeating pattern of white line-art icons. These icons include a lightbulb, a laptop with a magnifying glass, a book, a network diagram, a pencil, a document with a grid, a mouse, a flask, a test tube, a clock, a document with lines, a microscope, and a lightbulb. The icons are scattered across the entire page.

QUARTZY

University of Massachusetts Training
Mar 13, 2024

Transform how your lab **buys, tracks, and manages** supplies with the leading connected lab platform

[Webinar Recording Link](#)

Agenda

1. Quartzzy Introduction
2. Shopping with Quartzzy
3. Live Demo: See Quartzzy in Action
 - a. Shop
 - b. Requests
 - c. Inventory
4. Using Quartzzy to the Fullest
5. Getting Started Checklist
6. Q&A



Meet the Founders

Created by scientists for scientific labs

Co-founders Adam Regelmann and Jayant Kulkarni were leading research at Columbia University, when they aspired to create a universal lab management solution to solve the common problems they faced everyday in the lab.

Today, Quartzly is used by over **500,000** users worldwide



Jayant Kulkarni
PhD, Cornell
CEO

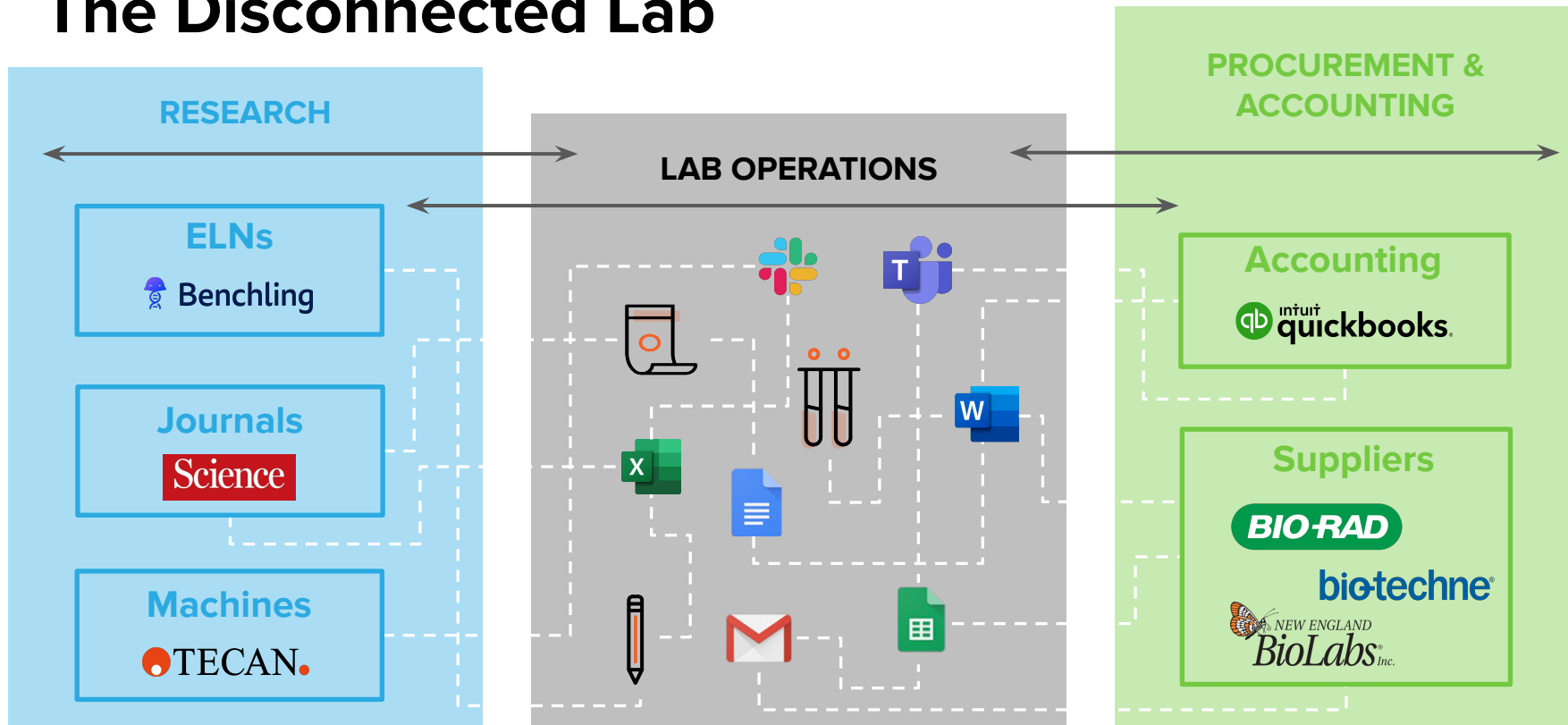


Adam Regelmann
MD, PhD, Columbia
CPO



The Current Landscape

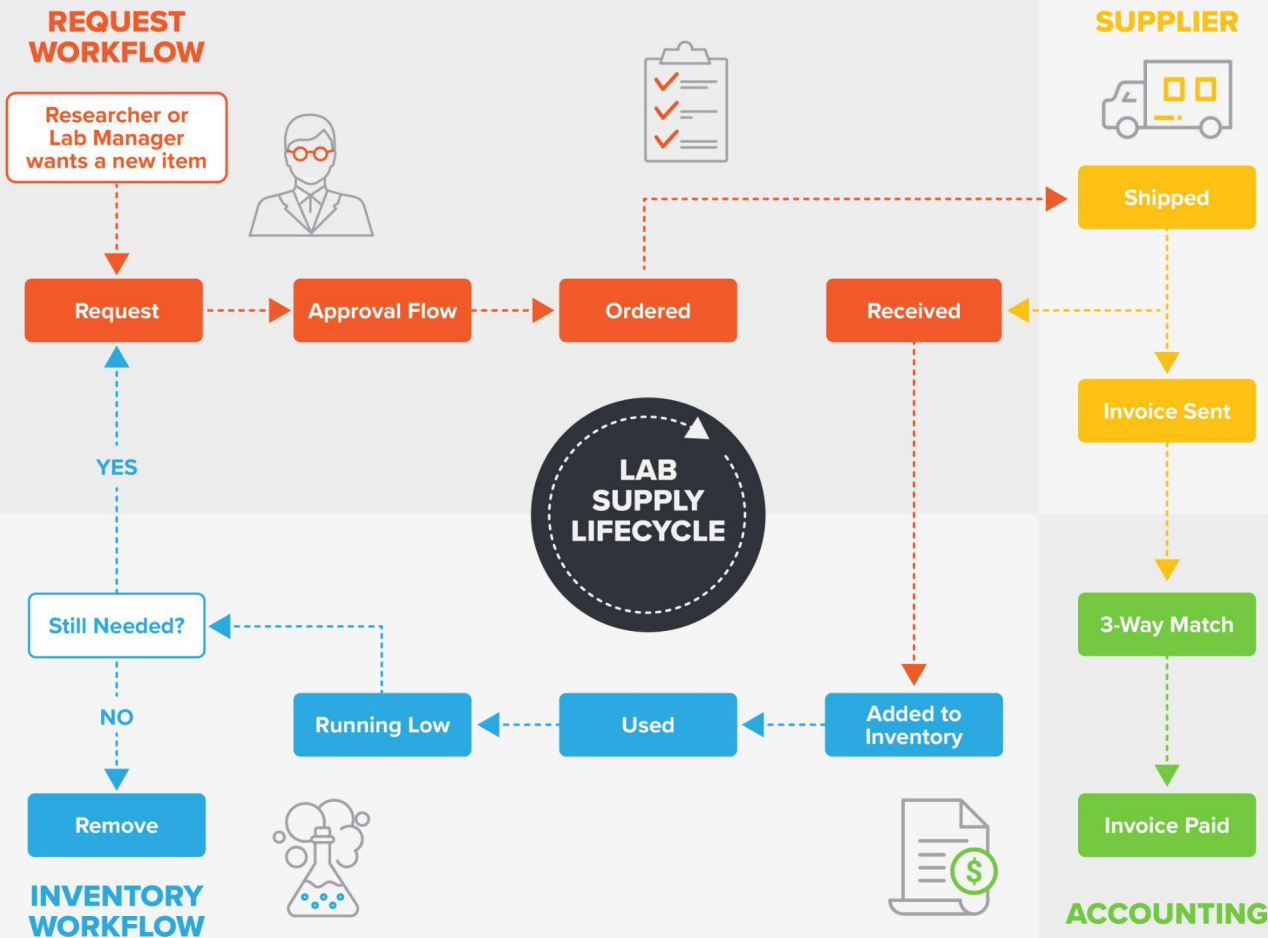
The Disconnected Lab



The background is a solid orange color with a repeating pattern of white line-art icons. These icons include a lightbulb, a laptop with a 'Q' logo, a book, a network diagram, a pencil, a document with a grid, a mouse, a flask, a test tube, a clock, a starburst, a document with lines, a document with a grid, a lightbulb, a flask, a test tube, a book, a test tube, a laptop with a 'Q' logo, a pencil, a clock, a flask, a test tube, a document with a grid, a network diagram, a book, and a test tube.

The Quartzly Solution

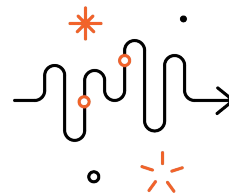
Accelerate the pace of discovery
with Quartzly's connected lab
platform



- Keep track of what needs to be ordered
- Request lab supplies
- Find product information
- Search for lower prices
- Track and search order history
- Log and track inventory

& more!

Quartzly meets laboratory's top 3 needs



1

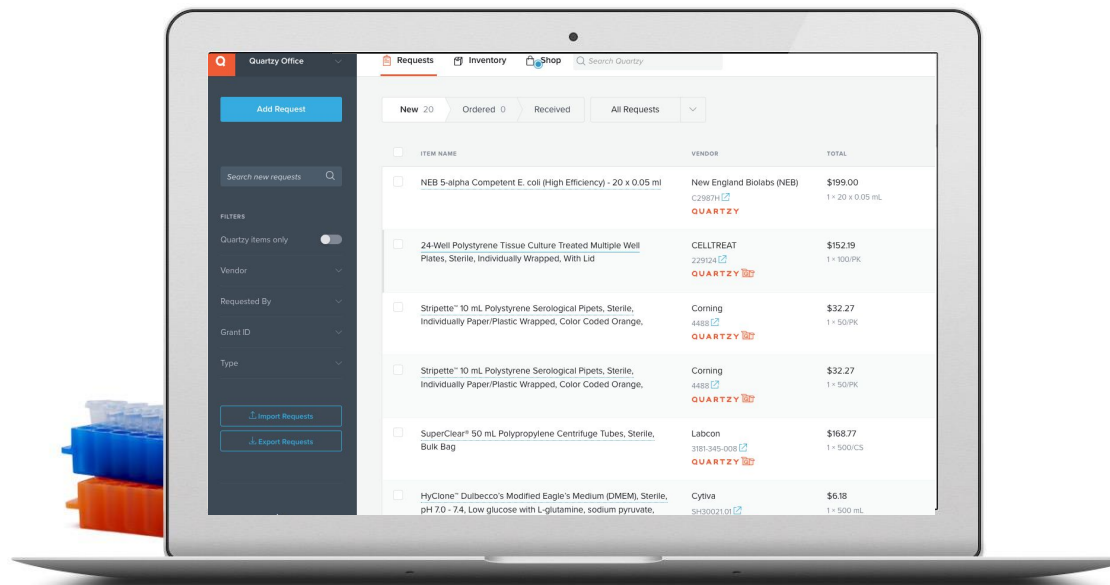
Easily track lab inventory

2

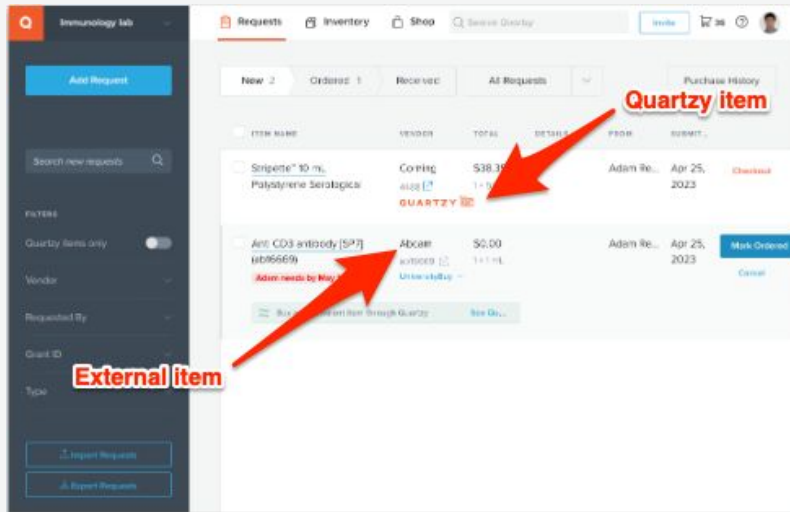
Efficiently process supply requests

3

Quickly buy, and track supplies



Centralize requests with Quartzzy



- **Conveniently request and track all supply orders in one system:**
 - Researchers can [request](#) items from any vendor using our Lookup or manual request form
 - Receive [automated email updates](#) when request status changes, including when items are received
- **Track important ordering steps and details**
 - Setup lab [approval](#) workflows
 - [Flag items urgent](#) or indicate [backorders](#)
 - Export [custom reports](#) of requests to understand lab supply usage and track grant spend





Keep an accurate inventory and reduce the time spent finding supplies

- **Know what you have:** Quickly view inventory location and quantity and make updates.
- **Keep track:** [Customizable](#). Set minimum and maximum thresholds for inventory items. Set [expiration dates](#) and receive email reminders.
- **Never run out:** [Receive timely alerts](#) when your inventory dips below a threshold and request more

ITEM NAME	VENDOR	AMOUNT	LOCATION	TYPE	OWNER	ADDED	UPDATED	
A single, 3" nail of normal thickness	Ace Hardware 764666174702	18 units	Ste 125	Office Sup...	Chris Tappe	Apr 20, 2017	Oct 25, 2022	Request
Qrp 70G Heat Gloves, 12 inches	QRP Gloves 70G QUARTZY	1 unit Min: 20 units Max: 100 units Low Stock	Back Cub... Shelf 3	General S...	Corinne D.	Mar 19, 2019	Oct 5, 2022	Request
Donkey serum, Sigma-Aldrich D9663-10ML	Sigma-Aldrich D9663-10ML QUARTZY	10 units Min: 15 units Low Stock		General S...		Jun 24, 2022	Jul 14, 2022	Request
Stapler, Stapler, Stapler Type=Desk	Staples 504365	1 unit		General S...	Amy K.	May 10, 2022	May 10, 2022	Request
Hamilton Beach 40540 Brew Station 40-Cup Coffee Urn, Silver	Amazon 40540	50 bottles						
Glue sticks	Office Depot n/a	28 bottles						

Item

Vendor: QUARTZY QRP Gloves

Catalog #: 70G

Amount In Stock: 1 unit | Min To Stock: 20 | Max To Stock: 100

Unit Price: 313.67 | Unit Size: 1/EA

URL: <https://www.coleparmer.com/i/qr-70g-he...>



Shopping with Quartzy

The one-stop-shop for all of
your lab supply needs

- Browse by supply categories
- Deeply discounted pricing
- Purchase 15M+ different products from 1,800+ life science brands & 350+ vendors



Here's a snapshot of supplies and brands we distribute:

- Cells/Cell Lines
- Chemicals & Biologics
- Consumables
- Enzymes
- Equipment
- Filtration/Purification Kits
- Office & Office Supplies
- Storage
- Safety & Cleaning
- Surgical Supplies
- Tissue and Culture



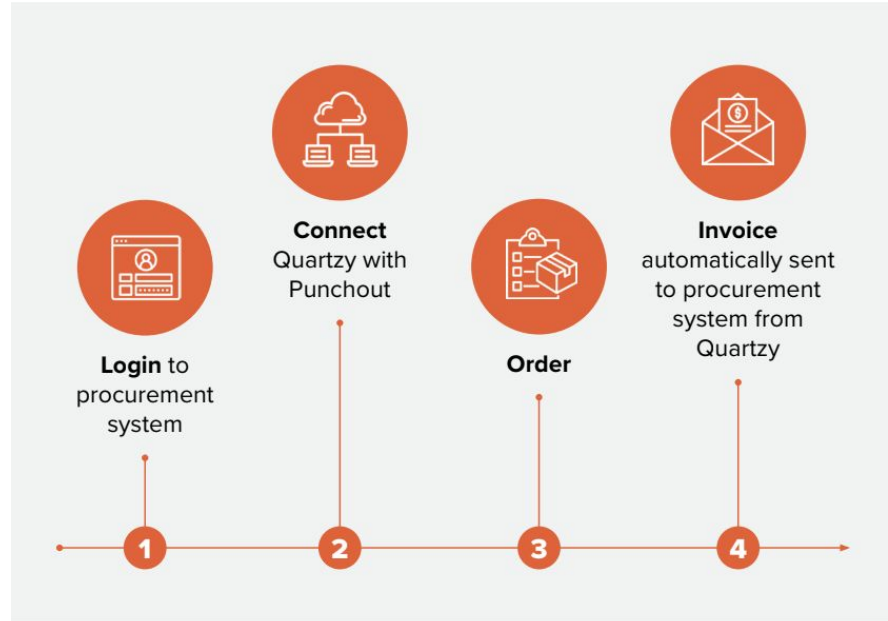
Explore more suppliers [here](#)

Quartzy Confidential & Proprietary



Purchasing made easy with Quartzzy PunchOut

1. Login to **Buyways**
2. Click the **QUARTZY** tile
3. **In Quartzzy**, add the items you'd like to purchase to the cart
4. Click the cart icon and finalize your purchase
5. **Submit the purchase request** which will transfer the cart to Buyways to complete last steps.
6. Click **Checkout**.



User Guide:

[Purchase from Quartzzy using PunchOut at University of Massachusetts](#)

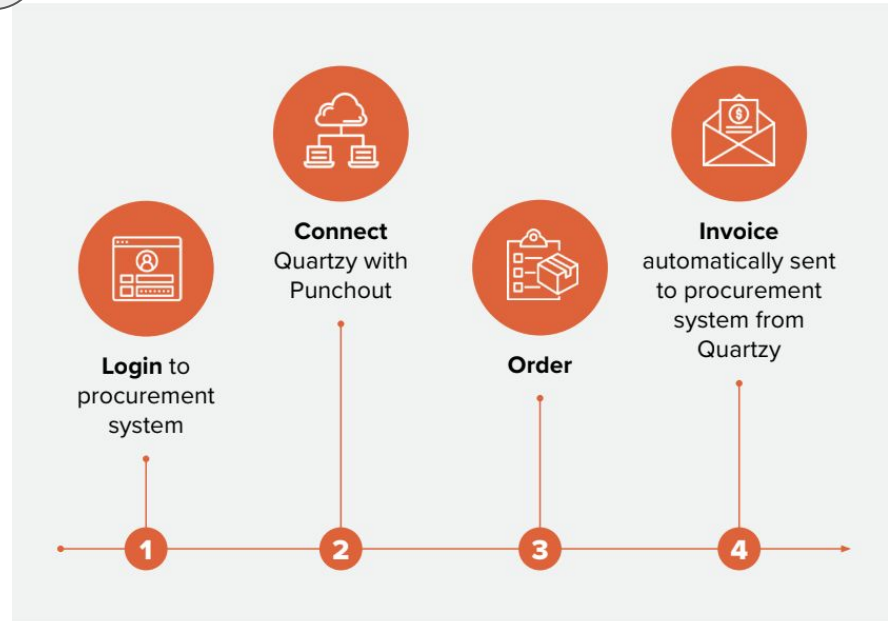
Save on lab supplies today with Quartzzy PunchOut!

EVERY NEW LAB RECEIVES \$250 TO PURCHASE LAB SUPPLIES USING QUARTZZY PUNCHOUT.



Promo codes are single-use and expire after 60 days. The code will present in your Quartzzy cart for you to apply to your order of >\$250.

[Apply a promo code using Quartzzy Shop PunchOut](#)



What you get when ordering from Quartzzy

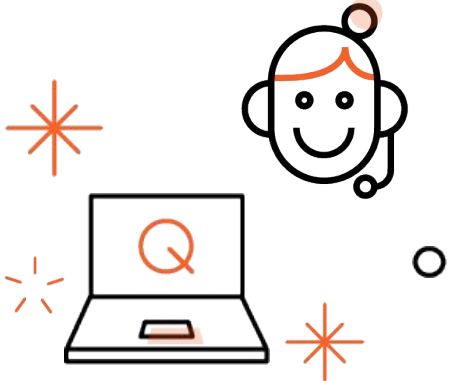
- 1 Competitive pricing w/ free standard shipping on all orders *exclusively for UMass labs*
- 2 Vendor communication and order updates are on us
- 3 Active order tracking
- 4 Two Quartzzy Fulfillment Centers (QFCs) to get products to you faster
- 5 Dropshipping provided from our partner suppliers if we don't have it in stock

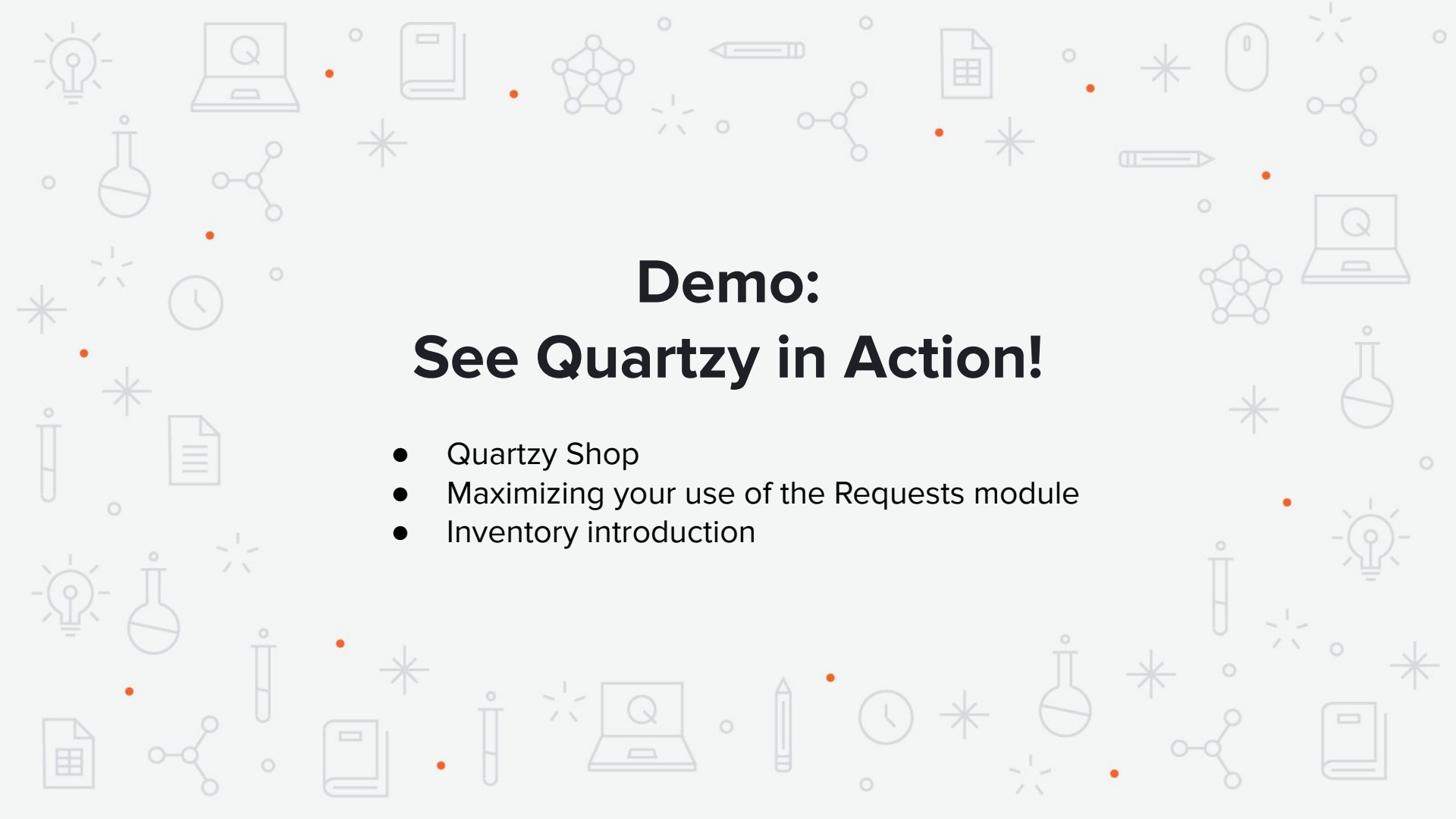


And...

What sets us apart!

Our *delightful* Customer Support Team, with a satisfaction score *above 98%*





Demo: See Quartzly in Action!

- Quartzly Shop
- Maximizing your use of the Requests module
- Inventory introduction



Using Quartzzy to the Fullest



Automated Inventory Alerts

Expiration Date Alerts

Know when an item needs to be discarded / replaced

- Set an [expiration date](#) for individual items within the Inventory module

Serial #AJ00004
(-)-THUJOPSENE >=97.0% 250MG
Owned By Taylor Greene
Request

Specs

Expiration Date

August 2019

Sun	Mon	Tue	Wed	Thu	Fri	Sat
				1	2	3
4	5	6	7	8	9	10
11	12	13	14	15	16	17
18	19	20	21	22	23	24
25	26	27	28	29	30	31

Serial #AJ00004
(-)-THUJOPSENE >=97.0% 250MG
Owned By Taylor Greene
Request

Specs

Expiration Date
10/31/2019

Auto Reminder
None

- None
- 1 week before
- 2 weeks before
- 1 month before



Min/Max Thresholds and Low Stock Alerts

Know when you need to reorder with min/max thresholds in your inventory

- Ability to set a [minimum and/or maximum threshold](#) for individual items.
- Inform users how much of an item should be ordered.

The screenshot displays an inventory management interface. On the left is a dark sidebar with a teal 'Add Item' button at the top, a search bar labeled 'Search inventory', and a 'FILTERS' section. The 'Low Stock' filter is turned on and highlighted with a red box. Below it are dropdown menus for 'Location', 'Type', 'Vendor', and 'Owner'. The main area shows a table with columns for 'ITEM NAME' and 'AMOUNT'. Each row includes a checkbox, the item name, and its current amount, minimum, and maximum thresholds. A 'Low Stock' alert icon is present for each item.

<input type="checkbox"/>	ITEM NAME	AMOUNT
<input type="checkbox"/>	10X TBE Buffer Concentrate	2 bottles Min: 2 bottles Max: 4 bottles 🔔 Low Stock
<input type="checkbox"/>	1000ul XTip4 LTS Tips, Non-Sterile	2 cases Min: 2 cases Max: 8 cases 🔔 Low Stock
<input type="checkbox"/>	1ml Sliptip TB Syringe	6 packs Min: 8 packs Max: 12 packs 🔔 Low Stock
<input type="checkbox"/>	(±)-Sodium β-hydroxyisobutyrate	5 bottles Min: 15 bottles Max: 20 bottles 🔔 Low Stock





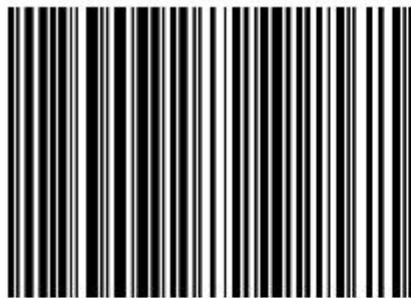
Quartzy-Generated Barcodes

Quartzzy Barcodes

- Generate barcodes from your Quartzzy inventory items
- 1D (classic) Barcodes and QR Codes
- Download Word document and print

Anatomy of a Quartzzy Barcode Label

Barcode



239380-A00120

Lab Prefix Serial Number

Item Name

Sars Envelope Blocking Peptide for SAB3500920

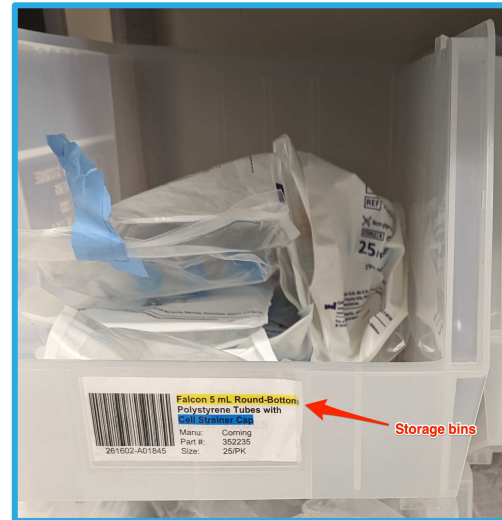
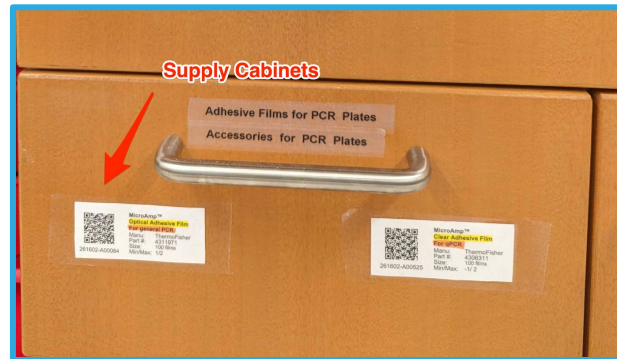
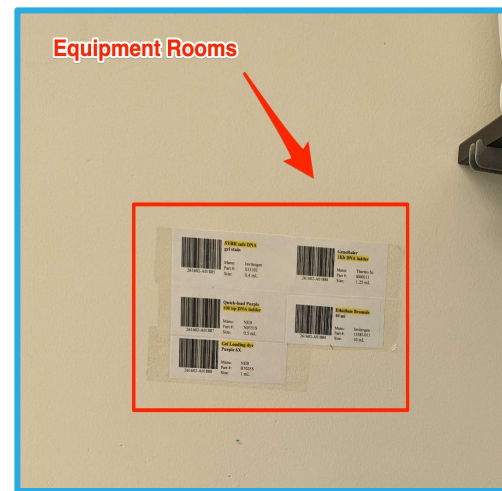
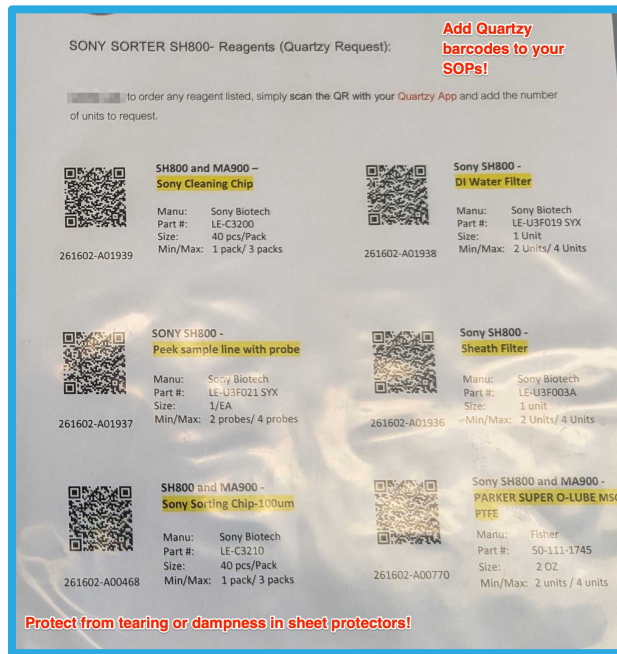
Manu: Sigma-Aldrich
Part #: SBP3500920-0.05MG
Size: 0.05 mg
Min/Max: 4 / 15

Item Details



Using Barcodes in the Lab

- Place somewhere items are permanently (or semi-permanently) kept.
 - Equipment Rooms
 - Supply Cabinets
 - Storage Bins
 - Racks or Shelves
- Protect from damage (dampness, tearing) with protective sleeves, tape or label covers
- Add Quartzly barcodes to your SOPs!



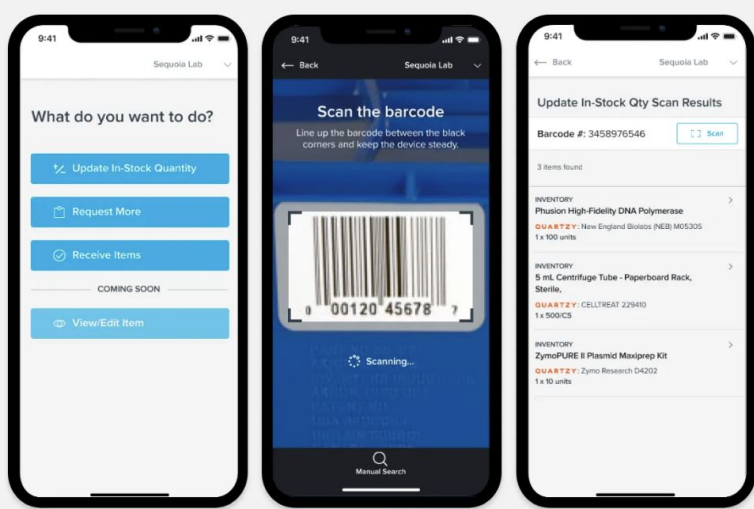
The background is a light gray field filled with a variety of small, white line-art icons. These icons include a lightbulb, a laptop with a 'Q' on the screen, a book, a network diagram, a pencil, a document with a grid, a mouse, a flask, a test tube, a clock, a starburst, a gear, a magnifying glass, and a smartphone. The icons are scattered across the entire page, creating a dense, thematic pattern.

Quartzy Mobile App

The power of Quartzy in your pocket!

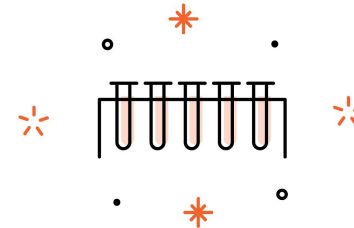
Quartzy Mobile App

Track inventory stock levels easily.



The [mobile app](#) puts the power of Quartzy in your pocket

- Create barcode labels for items in your stockroom
- Scan barcodes from your mobile device to search for the items in Quartzy
- Easily increase or reduce the amount in stock
- Request items while in the lab
- Receive items into inventory and upload packing slips



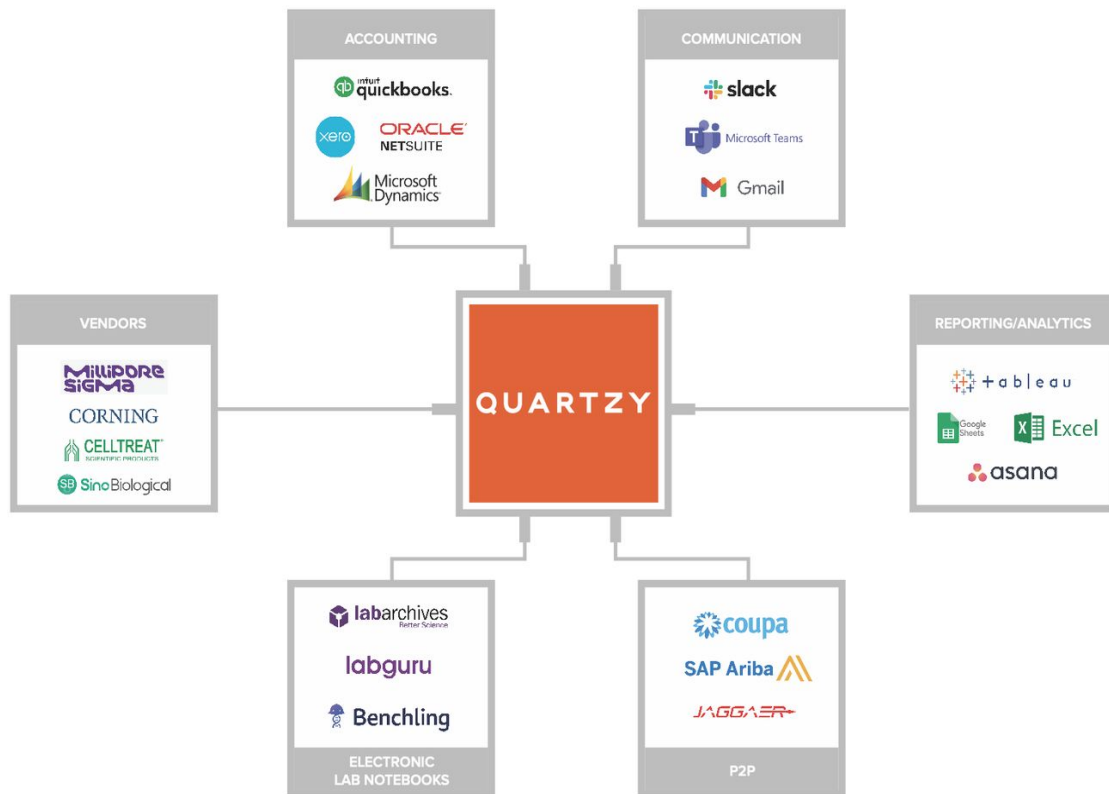


Integrations

**The Quartzly platform provides integrations
with the technologies you use daily for a
truly connected lab experience**

Achieve the connected lab platform

- Eliminate the manual transfer of data between softwares
- Automate manual process to reduce human error
- Increase efficiency by automatically syncing information between systems



Interested in learning more? Reach out to us at support@quartzy.com





Onboarding and Support

UMass + Quartzzy Partnership

Partnership Overview

- 1 LAB MANAGEMENT**

UMass labs have access to Quartzzy's lab supply management platform at no subscription cost to individual labs.
- 2 PUNCHOUT**

The subscription comes with a Punchout Integration that will allow for streamlined purchasing through Quartzzy's Shop giving you access to millions of lab supplies from your favorite brands.
- 3 DISCOUNTS ON SUPPLIES**

UMass has also negotiated deep lab supply pricing discounts from Quartzzy for member labs. Additional special pricing quotes can also be provided upon request.
- 4 \$250 PROMO FOR FIRST PURCHASE!**

All UMass labs have promo codes automatically applied to their account for immediate use.
[Learn more about how to apply promo codes.](#)
- 5 \$Free Standard Shipping!**

Quartzzy is offering Free Standard Shipping for all UMass Labs!



For more details, visit our [Quartzzy + UMass Info Page](#)

Quartzzy Confidential & Proprietary





Getting Started Resources

- [Intro video guides](#)
- [Step-by-step instructions](#)
- [On-demand webinars](#)
- [**Book an onboarding call!**](#)

Getting Started Checklist

Admins:

- [Create or join a lab](#)
- [Invite your members](#)
- Add [types](#) and [locations](#)
- Upload your [inventory](#) (and [order history](#))
- Register for [admin training series](#)

Members:

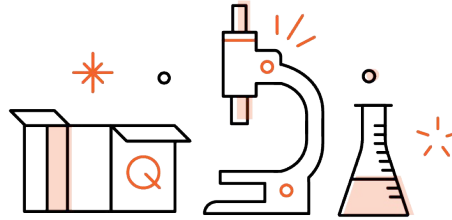
- Register for a [member training session](#)
- Add your first [Quartzy request](#)
- Add your first [non-Quartzy request](#)
- [Send a comment](#) using the tag function (@name)
- Once order received, “Mark Received” and include location where it will be stored

Support Resources and Contacts



Derek Schwartz
Account Manager

derek.schwartz@quartzys.com
(774)-265-2216



Self-Help Resources

- [Quartzys + UMass landing page](#)
- [Quartzys University](#) - training provided for you and your team!
- [Blog](#)
- [Support Center](#)
- [Quartzys Lab Managers LinkedIn Group](#)



Customer Success Team

success@quartzys.com

Contact for:

- Onboarding & feature training
- Tips on using Quartzys for your lab
- Feedback on features
- Helping your lab meet its goals with the system



Support & Life Science Teams

support@quartzys.com

Contact for:

- Technical questions
- Questions about a Quartzys order
- Sourcing alternative products
- Finding equivalent matches





Q&A