



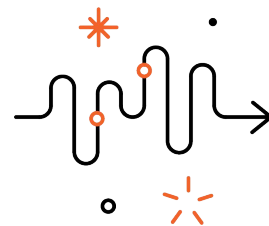
QUARTZY

# 2025 Product Roadmap

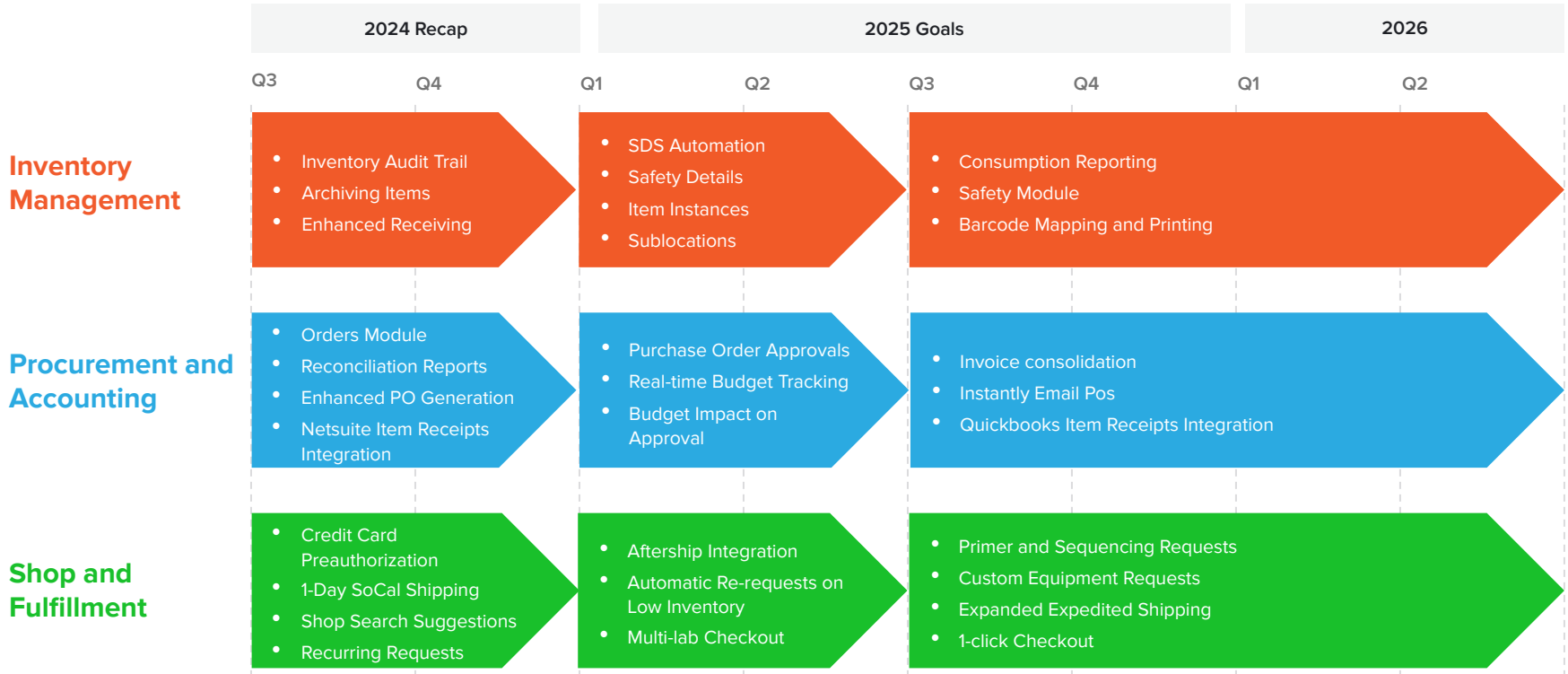
# Accelerating Scientific Discovery

We're building lab management tools that help research teams work smarter, not harder. Our platform supports your success through:

- Inventory Management
- Procurement and Accounting
- Shop and Fulfillment



# Roadmap Focus Areas



# Inventory Management

Our vision is an intuitive system for tracking lab supplies, maintaining safety protocols, and generating insights, based on scanning and automation features.

## We focus on the following areas:

1. Granular Tracking
2. Safety and Compliance
3. Reporting



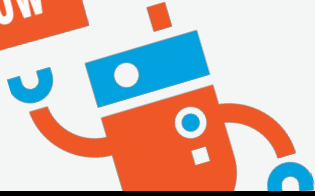
# Inventory Management for Research and EHS

Helping labs get organized, ensure safety compliance, and report on their activity.

| 2024 Recap   | 1H 2025 Goals   | 2H 2025 & Future  |
|--|---|---|
| <b>Inventory Audit Trail:</b> Log every interaction that happens with your inventory items.                                    | <b>SDS Automation:</b> Save time and reduce errors by automatically linking Safety Data Sheets to corresponding inventory items. Available Jan 2025. <a href="#">Talk with Sales.</a> | <b>Consumption Reporting:</b> Track and analyze inventory usage over time to optimize operations, forecast needs, and reduce waste.         |
| <b>Archiving Items:</b> Archive items to clean your inventory without deleting historical data.                                | <b>Safety Details:</b> Effortlessly manage and access essential information from Safety Data Sheets, seamlessly integrated within Quartzy. Available Jan 2025.                        | <b>Safety Module:</b> Help ensure compliance with built-in reporting, tailored recommendations, and proactive alerts to keep your lab safe. |
| <b>Enhanced Receiving:</b> Automatically increment stock counts and capture important inventory data while receiving packages. | <b>Item Instances:</b> Set multiple locations, lots, and expiration dates per item. <a href="#">Request early access!</a>   | <b>Barcode Mapping and Printing:</b> Map manufacturer barcodes and print customized labels for easy scanning.                               |
|  | <b>Sublocations:</b> Tracking at every level of location from room > freezer > shelf > rack > box. Available Spring 2025.   |   |



AVAILABLE NOW

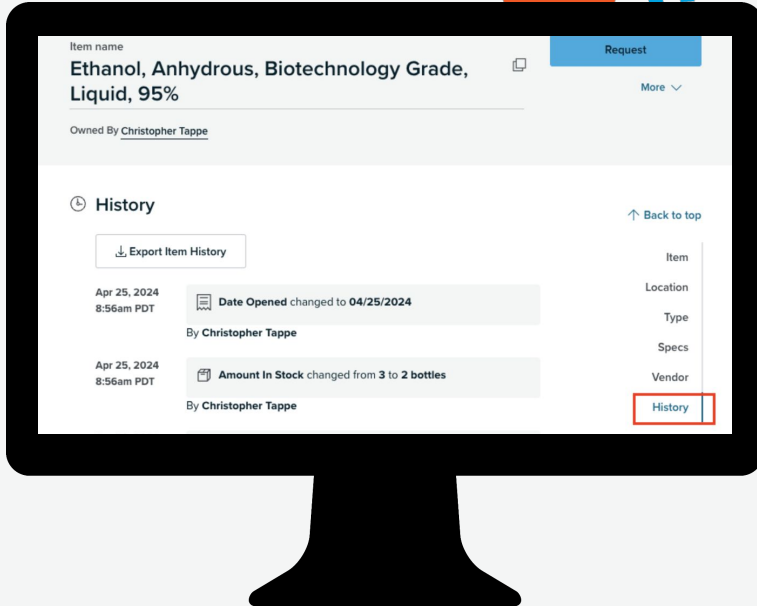


# Audit Trail

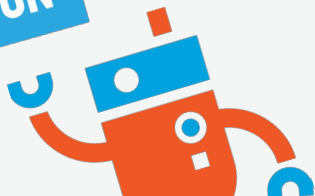
## Feature Highlight

The Audit Trail tracks all inventory updates:

- ✓ Item creation
- ✓ Quantity updates
- ✓ Expiration dates
- ✓ New lot numbers



COMING SOON

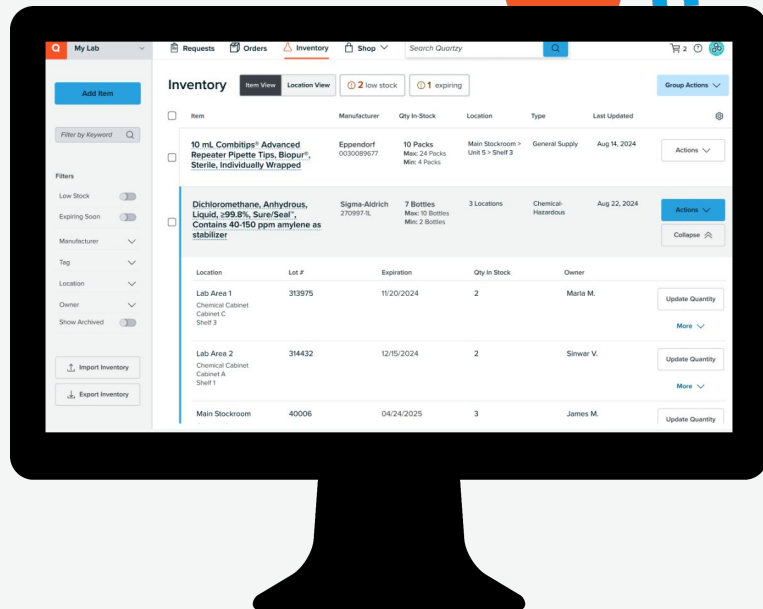


# Item Instances

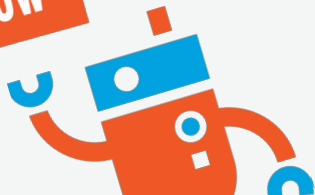
## Feature Highlight

Set multiple locations, lots, and expiration dates per item.

[Request early access!](#)



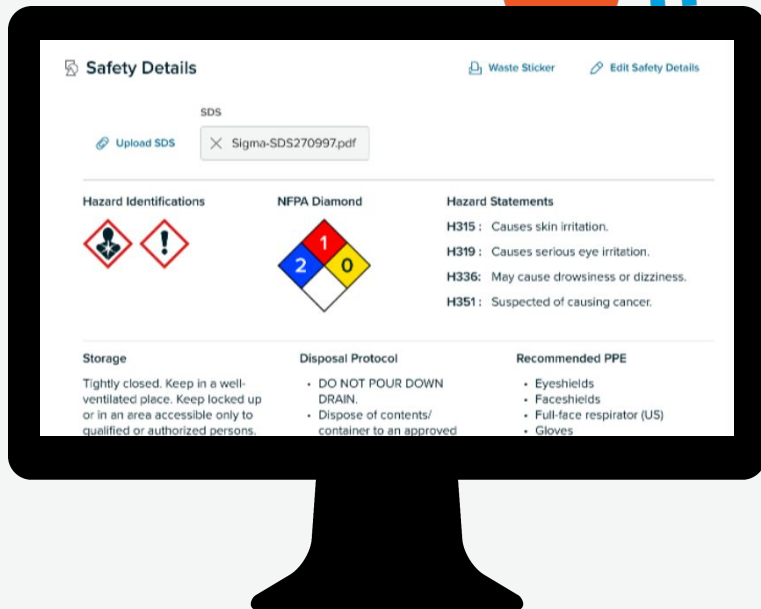
AVAILABLE NOW



# SDS Management

## Feature Highlight

Save time and reduce errors by automatically linking Safety Data Sheets to corresponding inventory items.



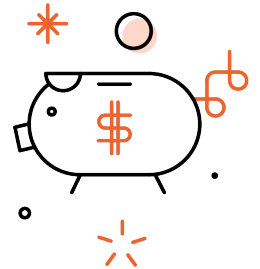


# Procurement and Accounting

Our vision is a seamless process for approving, reconciling, and tracking spend that meets accounting standards while staying simple and intuitive for both operations and research teams.

## We focus on the following areas:

1. Purchase Orders and Approvals
2. Budgets
3. Reconciliation and 3-way matching



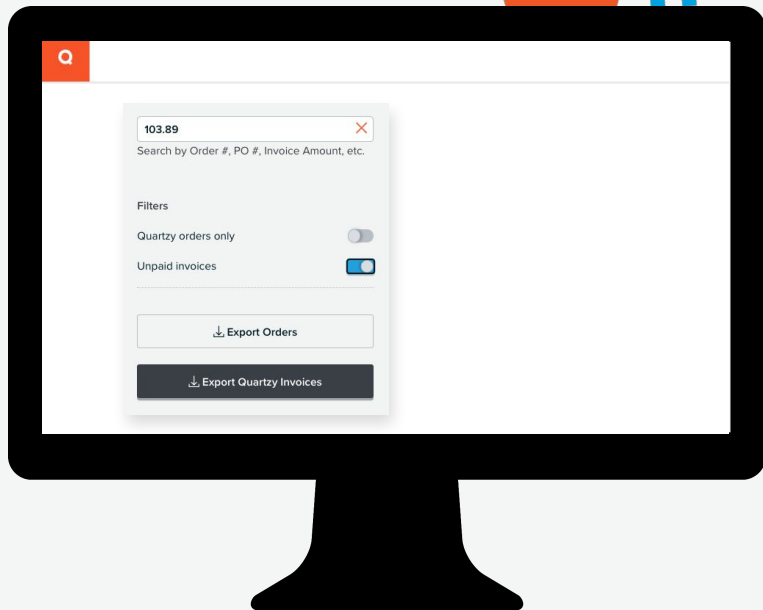
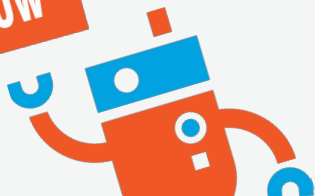
# Procurement and Accounting

*Empowering labs with tools to control costs, streamline purchases, and simplify reconciliation.*

| 2024 Recap   | 1H 2025 Goals   | 2H 2025 & Future  |
|--|---|---|
| <b>Orders Module:</b> Reconcile every invoice and credit card charge with search and 3-way matching.                                   | <b>Purchase Order Approvals:</b> Approve groups of requests using purchase orders. <a href="#">Join the waitlist.</a>         | <b>Invoice consolidation:</b> Simplify payments by grouping multiple invoices into one.                       |
| <b>Reconciliation Reports:</b> Track every order item and schedule automatic reports for month-end close. <a href="#">Learn More</a>   | <b>Real-time Budget Tracking:</b> Monitor project budgets with start and end dates, spending limits, and up-to-date tracking. | <b>Instantly Email POs:</b> Send purchase orders to vendors directly from Quartzly for faster processing.     |
| <b>Enhanced PO Generation:</b> Auto-generate PO#s and instantly export to PDF for faster ordering. <a href="#">Learn More</a>          | <b>Budget Impact on Approval:</b> Visualize the budget impact of approving requests and purchase orders.                      | <b>Quickbooks Item Receipts Integration:</b> Automatically reconcile POs to save time and reduce manual work. |
| <b>Netsuite Item Receipts Integration:</b> Automatically reconcile POs to save time and reduce manual work. <a href="#">Learn more</a> |   |   |



AVAILABLE NOW



# Order Reconciliation

## Feature Enhancement

- ✓ Export invoices in bulk
- ✓ Locate orders by searching unit price and order totals
- ✓ 3-way matching: PO <> Invoice <> Packing Slip
- ✓ Integrations with QBO, NetSuite and custom!
- ✓ Scheduling reports for your accounting team

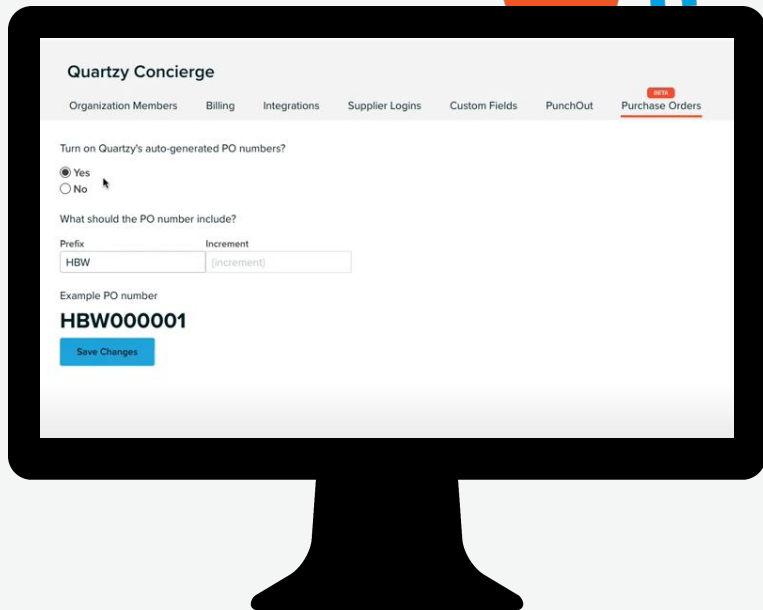
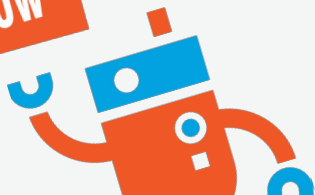
**Streamlined  
Workflows**



**Happy Procurement  
and Accounting Teams!**



AVAILABLE NOW



# Enhanced PO Generation

## Feature Enhancement

- ✓ Auto-generate PO#s
- ✓ Instantly export to PDF for faster ordering
- ✓ Help automate busy work and prevent errors
- ✓ Remain compliant with accounting practices



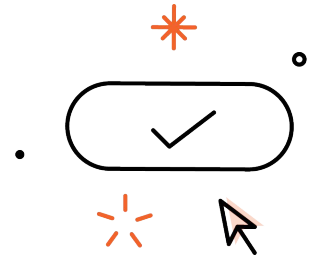
# Shop and Fulfillment

Our vision is a one-stop lab supply platform that saves time and money through fast checkout, efficient fulfillment, and customizable solutions for automated recording and specialized item requests.

## We focus on the following areas:

### Key Themes

1. Checkout & Fulfillment
2. Automation
3. Custom and large items



# Shop and Fulfillment

Accelerating lab operations with faster order fulfillment, smart reordering, and streamlined processes.

| 2024 Recap  | 1H 2025 Goals  | 2H 2025 & Future  |
|---|--|---|
| <b>Credit Card Preauthorization:</b> Eliminate delays caused by credit holds.   | <b>Aftership Integration:</b> Shipment tracking is already included on all your Quartzly orders and will now be extended to External orders. Quartzly Pro only. Talk to Sales. | <b>Primer and Sequencing Requests:</b> Simplify specialized ordering for primers and sequencing services. |
| <b>1-Day SoCal Shipping:</b> Ground shipping from Hayward to Southern California in just one day. <a href="#">Learn more.</a> | <b>Automatic Re-requests on Low Inventory:</b> Never run out of critical supplies with auto-reordering based on inventory levels.  | <b>Custom Equipment Requests:</b> Request and manage larger equipment purchased within the same workflow. |
| <b>Shop Search Suggestions:</b> Quickly find what you need with improved search capabilities.                                 | <b>Multi-lab Checkout:</b> Place your Quartzly Shop orders across multiple labs at one time.   | <b>Expanded Expedited Shipping:</b> Add faster shipping options to more items for urgent needs.           |
| <b>Recurring Requests:</b> Easily set up repeat orders in the Quartzly Shop for frequently ordered lab supply items.          |  | <b>1-click Checkout:</b> Speed up purchasing with instant checkout.                                       |





# 1 Day Shipping

To Southern California

Ground shipping from Hayward to Southern California in just one day.

